

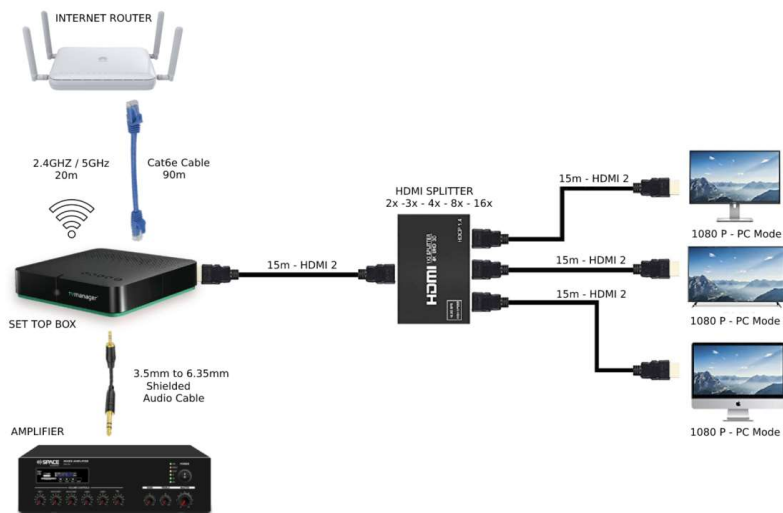


TV Manager

TRAINING PRESENTATION

TVmanager™

BASIC SETUP NO DSTV



Basic Wiring

Start up

1. Plug in your TV Manager Box to your TV.
2. Connect a USB mouse to the TV Manager open USB port
3. Once your TV is turned on, the TV Manager app should appear on your screen.
4. Look for the settings button located at the top of the screen and click on it.
5. Select the Wi-Fi settings and search for your Wi-Fi network name.
6. Enter your Wi-Fi password and connect your TV Manager Box to the Wi-Fi network.
7. After you've successfully connected to Wi-Fi, unplug your TV Manager Box and wait for 10-20 seconds.
8. Plug your TV Manager Box back in. It may take a few moments to reconnect to the Wi-Fi network, and it may say "no internet connection" during this time.
9. Once the connection is established, your TV Manager Box will just show TV Manager Logo in the middle of the screen.

Dashboard

13:10:47 TVmanager™

WhatsApp ZA - Stone Grill Monique van der Merwe

Dashboard Manage Playlists News Settings

1 Groups | Screens: 0/2 Search for group name or MAC

Group Name	Content
0/2 1 Stone Grill	<div>TV 201 - SuperSport Grandstand (SA)</div> <div>Event 10' ATP - Spain. Madrid</div> <div>Logo stone_grill_logo</div>

Toolbar Functions:

- Uploads
- Web Pages
- Texts
- Logos
- TV
- Live Events

Uncategorized List:

- FLATTIES
- FRIDAY DATE NIGHT
- FRIDAY STIR FRY
- MIXED GRILL
- MONDAYS RIBS AND WINGS
- PLATTERS
- SATURDAY BREAKFAST BUFFET
- SATURDAY EISBEIN
- SATURDAYS TBONE
- SCHNITZEL SPECIAL
- STEAK EGG WEEK SPECIAL
- SUNDAY BUFFET

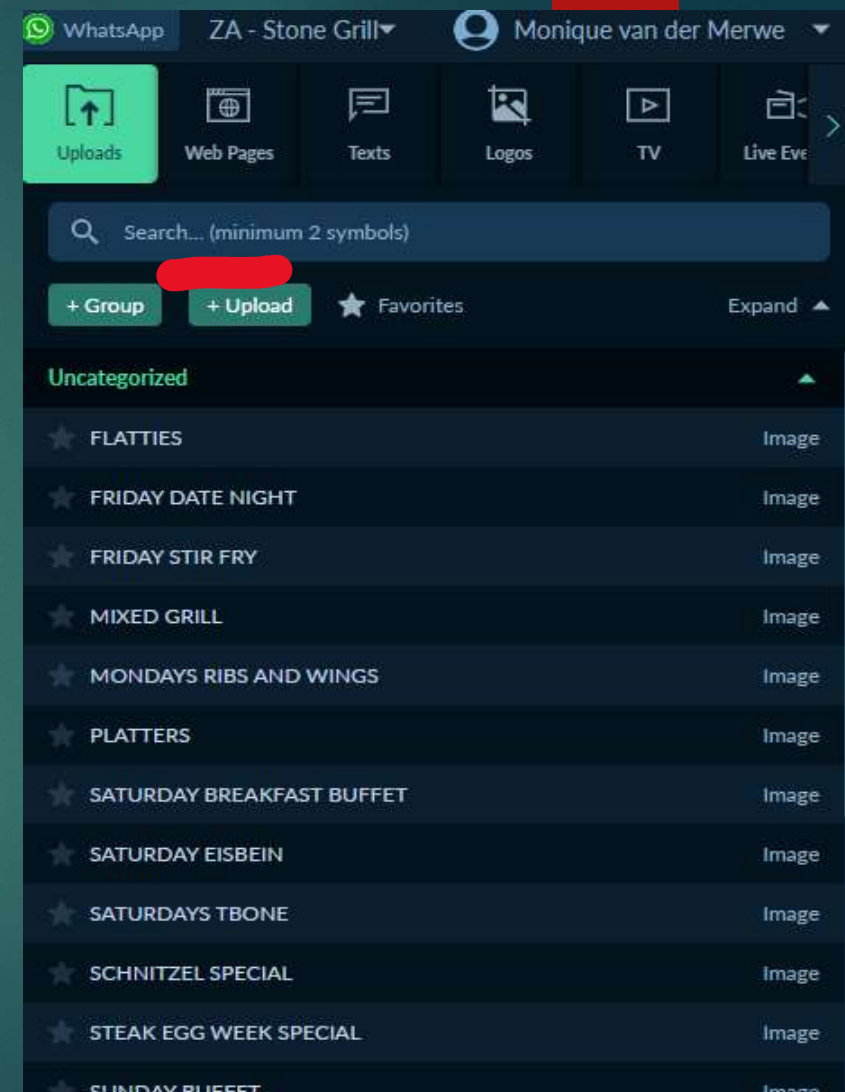
The Toolbar includes the following functions:

1. Upload - This function allows you to upload media files such as videos, images, or audio to your TV.
2. Webpage - Access your favorite websites directly from your TV by using the Webpage function.
3. Text - Add text to your TV screen for announcements or messaging.
4. Logo - Add your own custom logo to your TV screen to give it a personalized touch.
5. TV - Use the TV function to access live TV channels and shows.
6. Live events - Watch live events such as sports, concerts, or news broadcasts using this function.
7. Playlist - Create and customize your own playlists of media files and enjoy them on your TV.

In the following slides, we'll explain each of these functions in more detail so you can get the most out of your TV Toolbar.

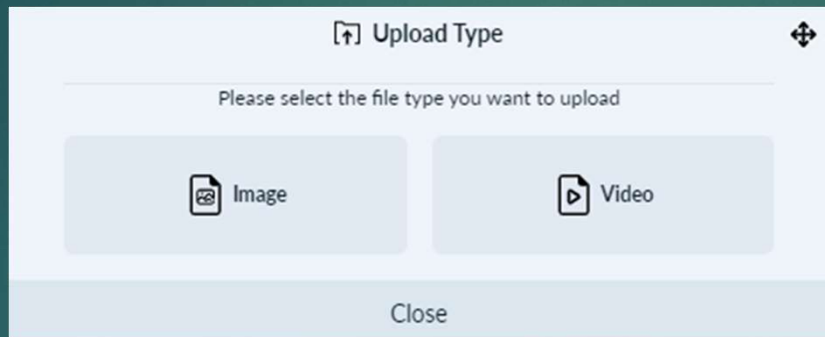
Dashboard Introduction

- ▶ The Upload function is your gateway to accessing your device's gallery and uploading your media content to your TV Manager Box.
- ▶ Here's how it works:
 1. Click on the Upload function from the Toolbar.
 2. This will take you to your device's gallery, where you can select the media content you want to upload to your TV.
 3. Once you've selected your media content, it will be automatically uploaded to your TV Manager Box.
- ▶ We want to make sure you have a seamless experience with all the functions on the Toolbar, so we'll be explaining each one in more detail in the following slides.
- ▶ By using the Upload function, it's easy to share your favorite pictures, videos, and other media content on your TV Manager Box. Please see the following slides for more information on how to use the other functions.



Uploads

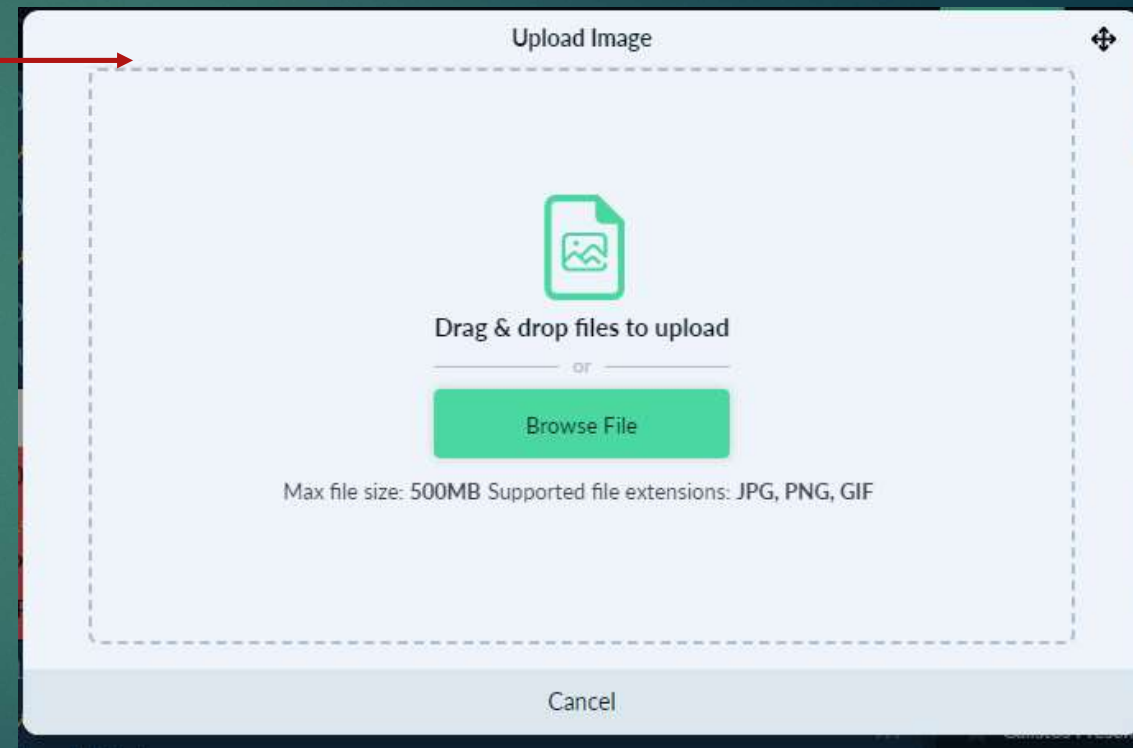
- ▶ To use the Upload function, simply click on the Upload button on the Toolbar. This will open a window with two options - Image and Video.



- ▶ If you want to upload an image, click on the Image option and select the image you want to upload from your device's gallery.
- ▶ If you want to upload a video, click on the Video option and select the video you want to upload from your device's gallery.
- ▶ Once you've selected the media you want to upload, it will automatically be uploaded to your TV Manager Box. It's as simple as that!

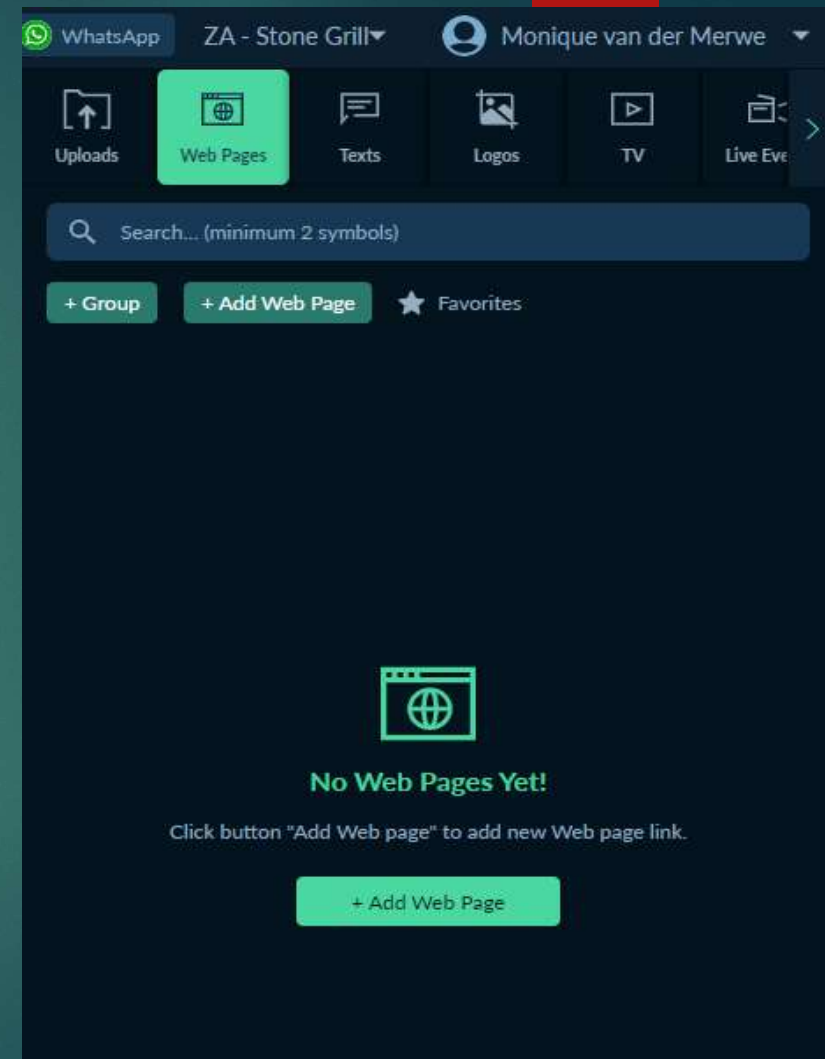
Uploads

- ▶ After selecting either the Image or Video option from the Upload function on the Toolbar, a window will appear with further instructions on how to proceed.
- ▶ To upload your desired media file, click on "Browse File". This will open up your device's documents. From there, navigate to your gallery and select the media item you want to upload. It's important to note that you should not drag and drop the item into the upload block. Instead, click on the item you want to upload, and then click "Open". This is the only way to ensure that your media item will upload properly.
- ▶ Once you have selected and opened your desired media item, click "Save". Your media item will then be uploaded and added to your TV Manager Box.
- ▶ Following these steps will make sure that your media items are uploaded without any issues and ready to be viewed on your TV.



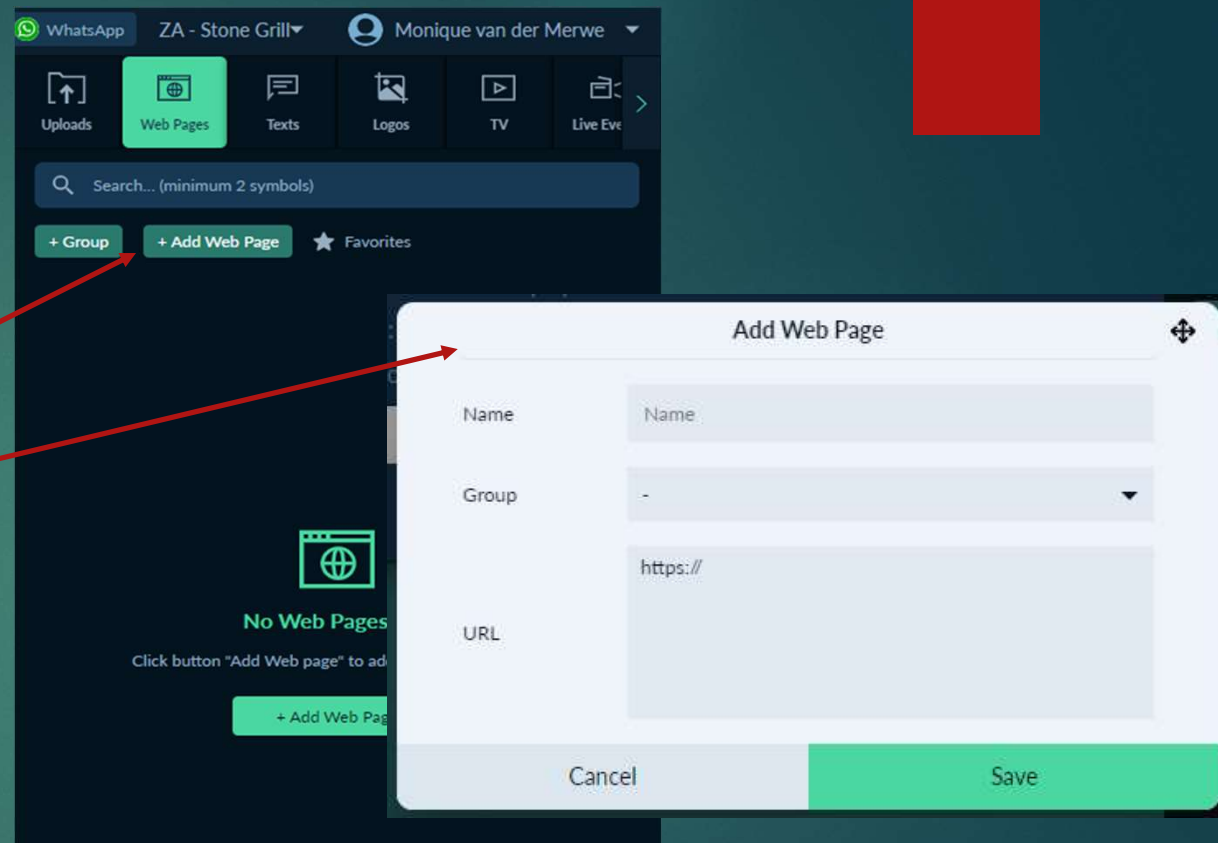
Web Pages

- ▶ The Web Page Function enables you to display your website on your TV, allowing you to showcase a slideshow of your website using this feature.
- ▶ However, please note that this function requires your website to have a moving background in order to work properly. We provided a detailed explanation of this requirement in the demo we conducted for you. If you have any questions or need further clarification on this matter, please feel free to reach out to us.
- ▶ Additionally, it's worth mentioning that the Function also supports YouTube, but you will need to connect a wireless or wired mouse and keyboard to be able to type and play songs on YouTube.

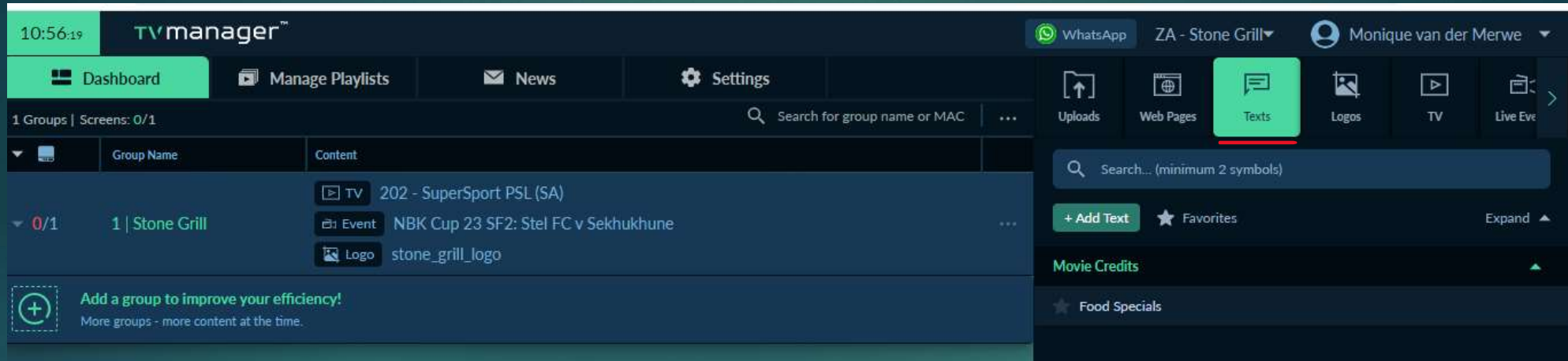


Web Pages

- ▶ Open the provided picture for reference.
- ▶ Locate and click on the "Add Web Page" button.
- ▶ A new page will appear with the following fields:
- ▶ Name: Enter the name of your website.
- ▶ Group: Leave this field open.
- ▶ URL: Paste the address of your website in this field.
- ▶ Click on the "Save" button to save the changes.
- ▶ Drag the newly added website into your dashboard in order to display it on your TV.



Text



1. Click on the Text Function to activate it.

1. Enter the desired text, ensuring that you do not leave any spaces at the end of your text.

2. The Text Function offers different options for how you want the text to be displayed on your TV.

1. We recommend selecting "Movie Credits" as it will display a running line below your TV screen.

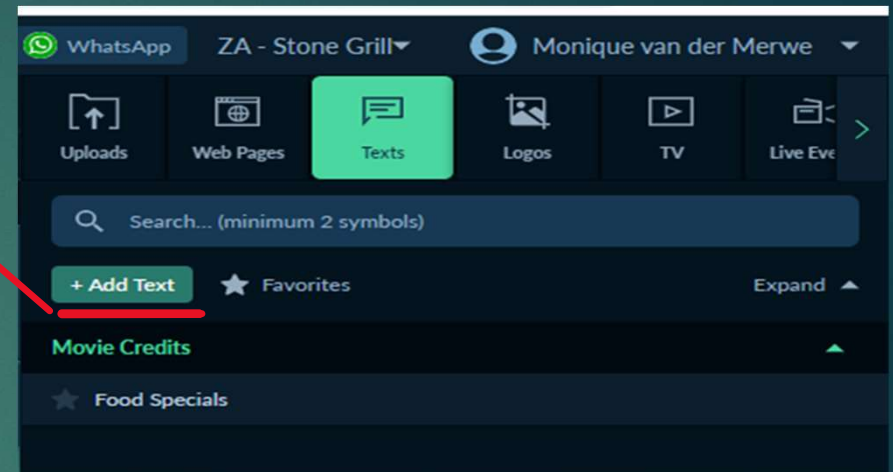
Feel free to explore other options based on your preference.

Text

To add text using the Text Function, follow these steps:

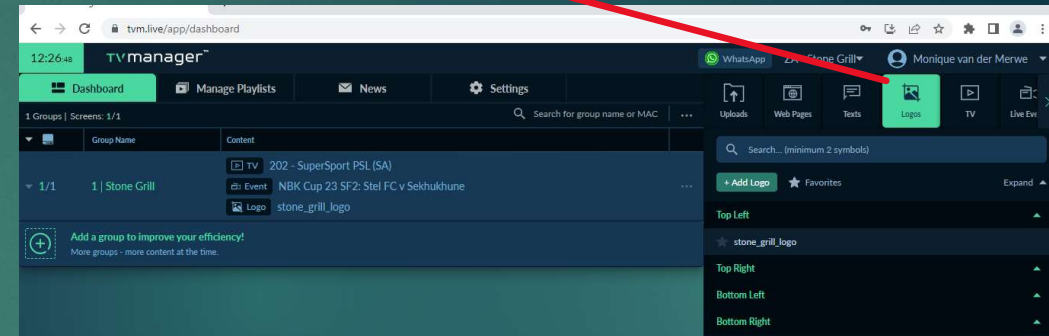
1. Click on the "Add Text" button.
2. A new screen will appear with the following fields:
 1. Name: Enter a topic or title for the text you are adding.
 2. Type: Select "Movie Credits" from the available options.
 3. Content: Enter the desired text content.
3. After entering the necessary information, click on the "Save" button to save the text.
4. To display the text on your TV, drag and drop it onto your dashboard.

By following these steps, the text will be added and shown on your TV screen.

A screenshot of the 'Add text' dialog box. It has a title bar 'Add text' with a close button. Inside, there are three input fields: 'Name' with a placeholder 'Name', 'Type' with a dropdown arrow, and 'Content' with a placeholder 'Content'. At the bottom, there are two buttons: 'Cancel' and 'Save'.

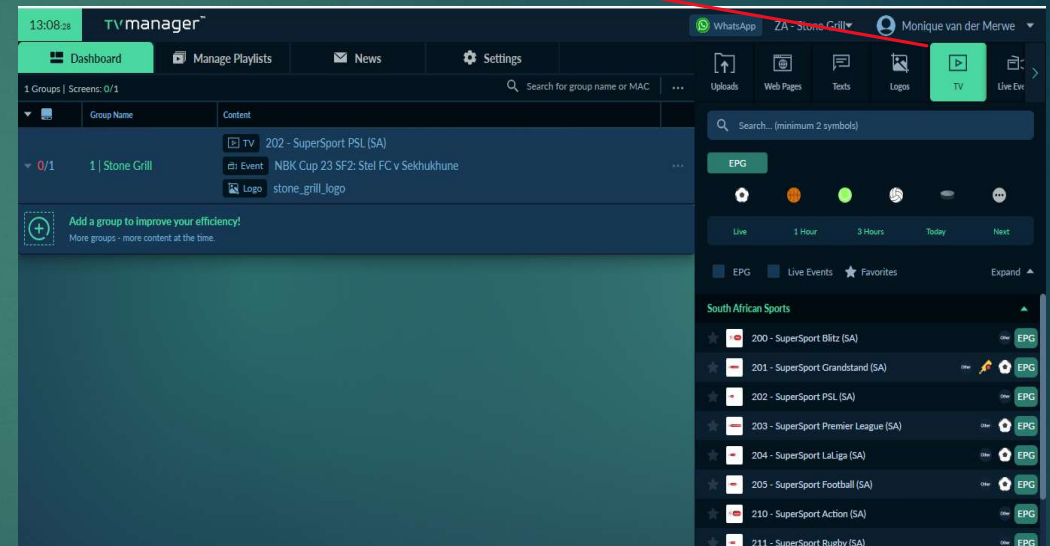
Logo's

- ▶ The Logo Function allows you to add your logo to your TV screen while LIVE TV is playing. To use this function, follow these steps:
 1. We will provide you with the format and size requirements for your logo. Alternatively, we can create a logo for you.
 2. Locate and click on the Logo Function on your screen.
 3. On the following screen, you will see options related to the Logo Function.
 4. Under the "Logos" section, click on the upload button to select and upload your logo.
 5. Choose the desired location for your logo on the TV screen (bottom, top, left, right, or middle).
 6. Once your logo is uploaded and the placement is selected, drag and drop it onto your dashboard.
 7. The logo will now be displayed on your TV screen while live TV is playing.
- ▶ If you have any further questions or need assistance, please refer to the provided instructions or reach out to our support team.



Live TV

- ▶ The TV Manager device allows you to market yourself by selecting and displaying sport channels of your choice. Currently, we offer channels numbered from 200 to 214, with ongoing updates and upgrades to expand the channel selection.
- ▶ To choose and watch a specific channel at your preferred time, follow these steps:
 1. Drag the desired channel from the available options onto your dashboard.
 2. By doing so, the selected channel will be displayed on your TV screen according to your schedule and preferences.
- ▶ This feature enables you to curate the sport channels you want to showcase, providing you with control over the content being played on your TV.



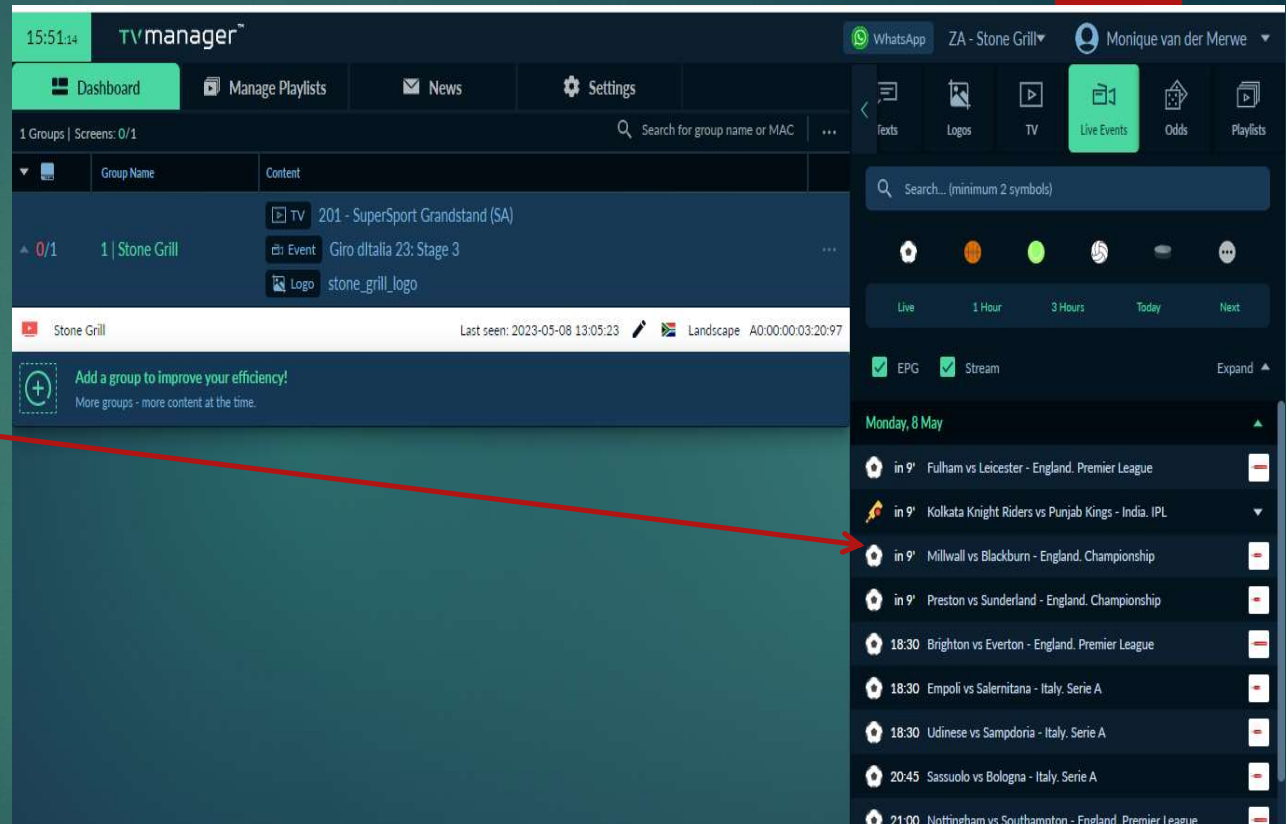
Live Events

► The Live Events function is designed to provide you with control and awareness of important sport events. This feature ensures that your TV automatically switches to the designated channel as soon as the event begins, eliminating the need for manual channel changes.

► To utilize the Live Events function, follow these steps:

1. Click on the Live Events option, which will open a new screen.
2. In this screen, you will see a list of upcoming sport events.
3. Locate the desired event and drag it into your dashboard or designated group.
4. By dragging the event into your dashboard or group, you activate it for automatic channel switching.
5. When the event starts, your TV will automatically switch to the corresponding channel, allowing you to enjoy the live coverage without any manual intervention.

► By using the Live Events function, you can stay updated and never miss important sports events, ensuring a seamless viewing experience on your TV.



Playlist



The Playlist Function empowers you, as the user, to schedule and manage your desired content on your TV. You have the flexibility to create and upload content in the sequence and timing you prefer.



Here's how you can utilize the Playlist Function:

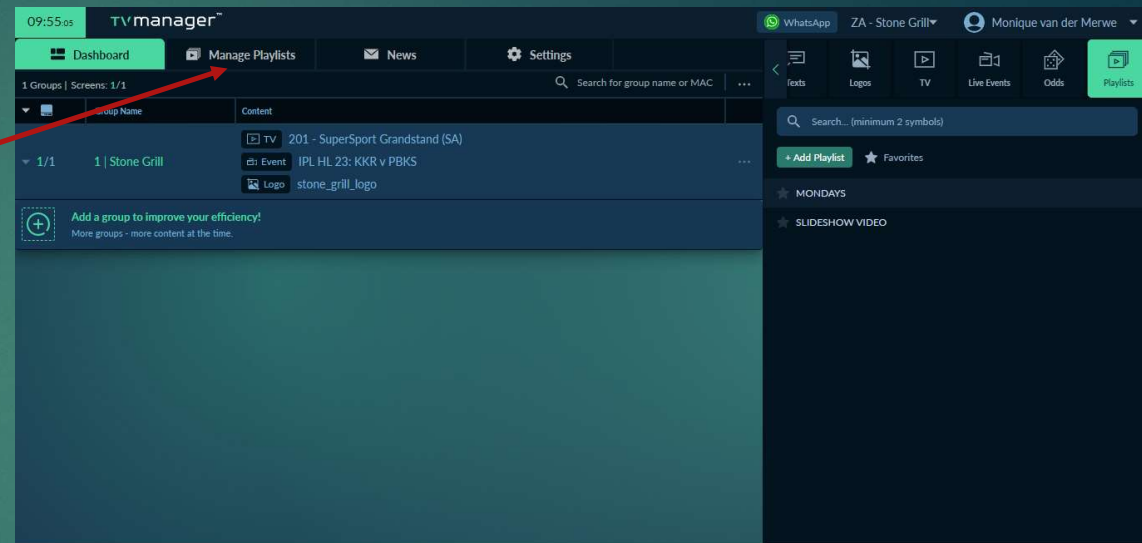
1. Create and upload your desired content, such as videos, images, or slideshows, to the playlist.
2. Arrange the content in the order you want them to be displayed on your TV.
3. Set specific schedules for each item in the playlist, indicating when each content should be shown.
4. For live events, you can schedule the playlist to automatically switch over to the event as soon as it starts.
5. Plan your playlist ahead, whether it's for a week or a month, according to your preferences and requirements.



With the Playlist Function, you have full control over the content and timing, enabling you to curate a dynamic and engaging TV experience for your viewers.

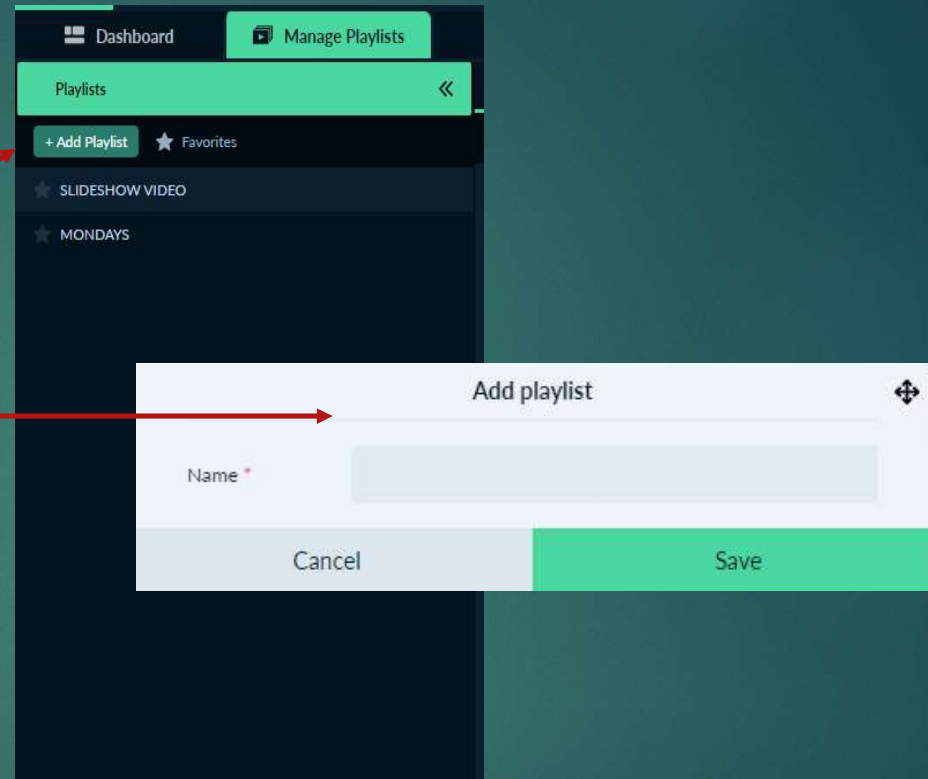
Playlist

1. To access and manage your playlist, follow these steps:
2. Look for the "Manage Playlist" tab or option. Click on it to open the playlist management interface.
3. Once you have accessed the "Manage Playlist" tab, you will see various options and settings available to create and customize your playlist.
4. Explore the options provided to create a perfect playlist according to your preferences.
 1. You may find options to add or remove content, set schedules, adjust playback settings, and more.
5. Utilize the available features and settings to create a playlist that suits your needs, including arranging the order of content and setting specific playtimes.
6. Make any necessary adjustments or modifications to ensure your playlist is organized and optimized for your desired TV experience.
7. By accessing the "Manage Playlist" tab, you will have all the tools and options at your disposal to create and customize your playlist to perfection.



Playlist Create

1. To add a new playlist, follow these steps:
2. Look for the "+Add Playlist" button and click on it.
3. A new window will open, presenting various fields for playlist configuration.
4. In the "Name" field, give your playlist a descriptive name that represents its content or purpose.
5. Once you have provided a name for the playlist, click on the "Save" button to save the changes.
6. By following these steps, you will successfully create a new playlist with the specified name. This allows you to organize and manage your content effectively within the designated playlist.

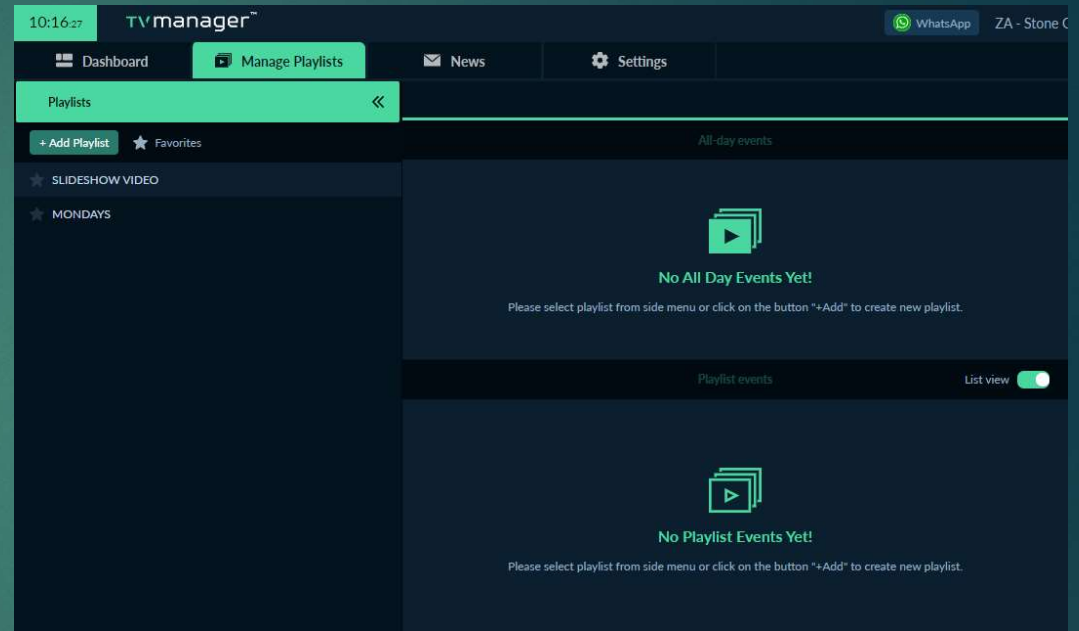


Playlist Create



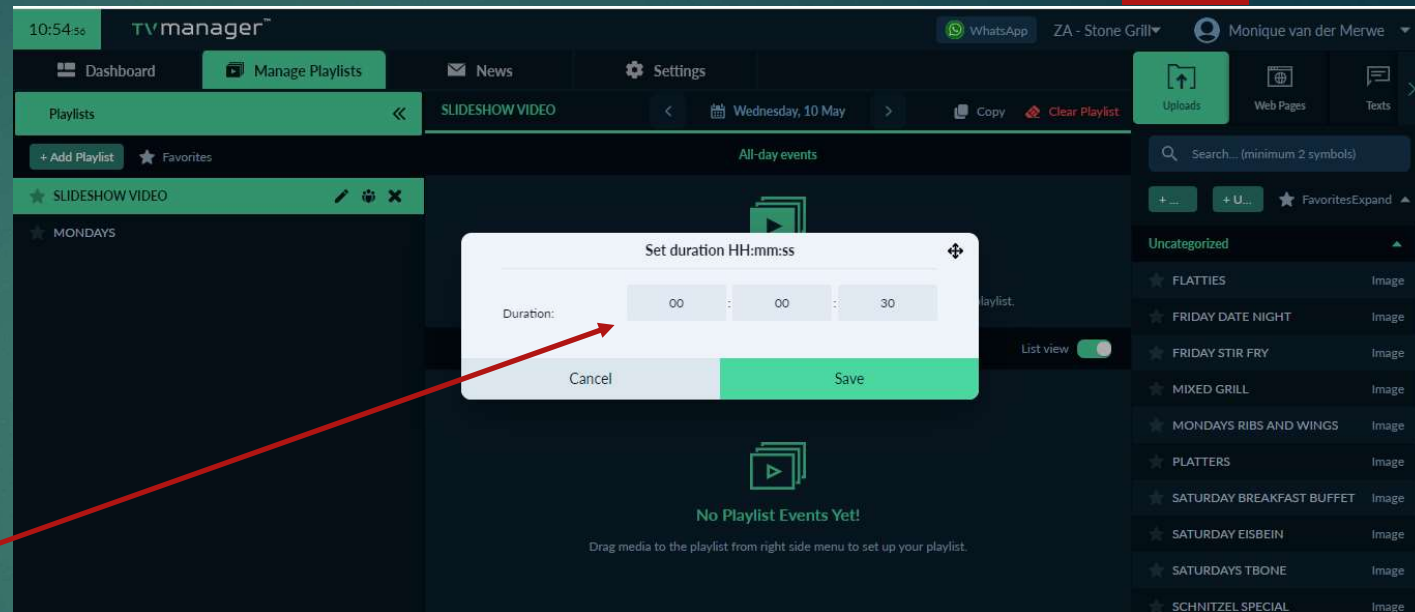
Once you have saved or created a playlist, you can start adding content to it. Here's how you can do it:

1. Select the playlist that you want to add content to by clicking on it. This ensures that the content will be added to the correct playlist.
 2. Once the playlist is selected, you can proceed to upload or drag your desired content onto the playlist.
 3. To upload items, look for the option to upload files within the playlist interface. Click on it and select the files you want to add from your computer or storage device.
 4. Alternatively, you can drag and drop content directly onto the playlist from your computer or a designated folder.
- ▶ By following these steps, you will be able to add your desired content to the selected playlist, allowing you to curate and arrange the items in the order you want them to be displayed on your TV.



Playlist Create

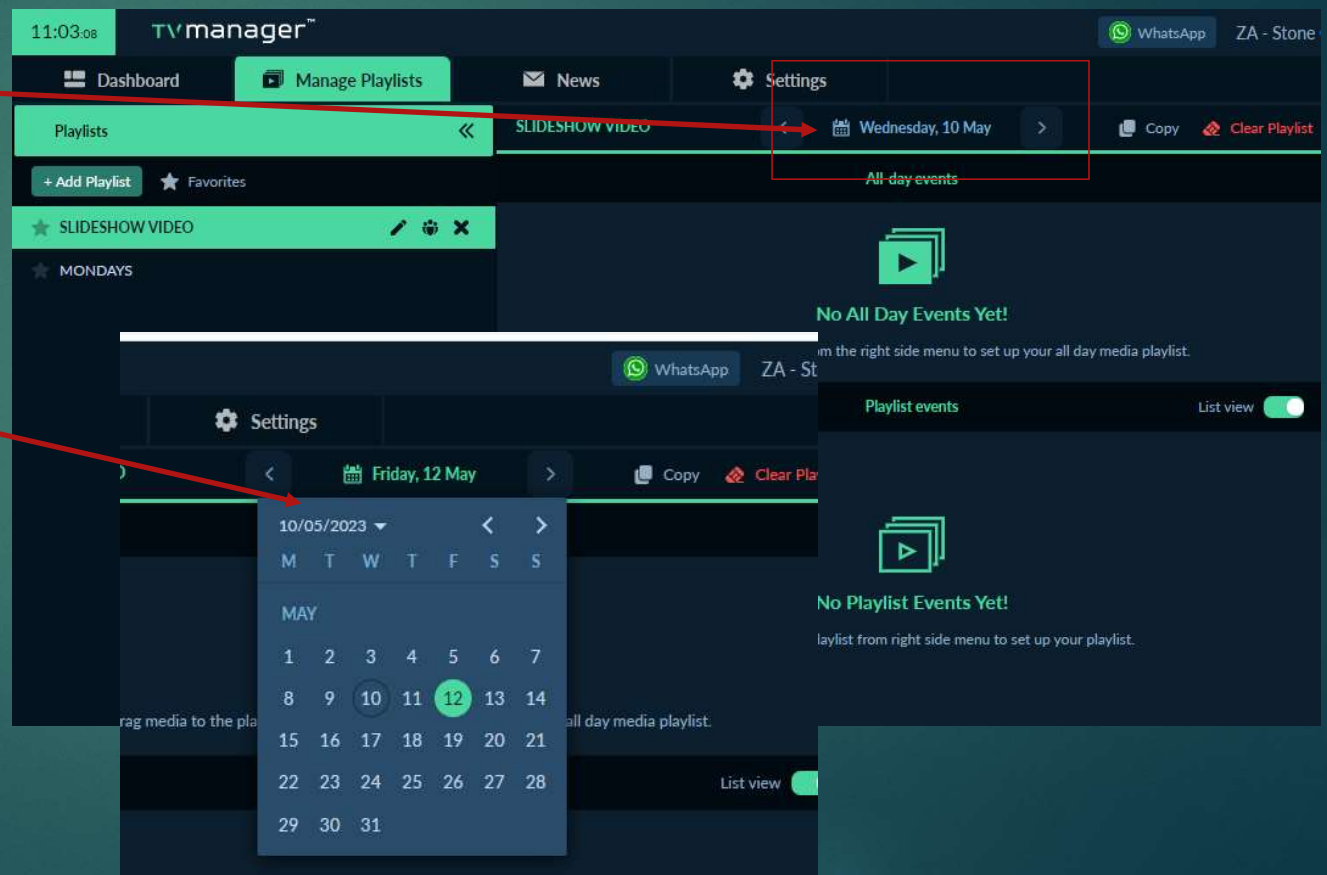
- ▶ After selecting the playlist and uploading content, a window will appear to specify the duration for which the content should be displayed on your TV. The window typically includes options for setting the duration in hours, minutes, and seconds.
- ▶ Here's how you can indicate the duration for your content:
 1. After uploading an item to the playlist, review the window that appears.
 2. Look for the fields labeled "Hours," "Minutes," and "Seconds."
 3. Enter the desired duration for your content in each respective field. For example, if you want the content to display for 3 minutes and 30 seconds, you would enter "00" in the "Hours" field, "3" in the "Minutes" field, and "30" in the "Seconds" field.
 4. Repeat this process for each item you upload to the playlist, setting the appropriate duration for each one.
- ▶ By indicating the duration for each content item, you can control how long each piece of content will be displayed on your TV before transitioning to the next item in the playlist.



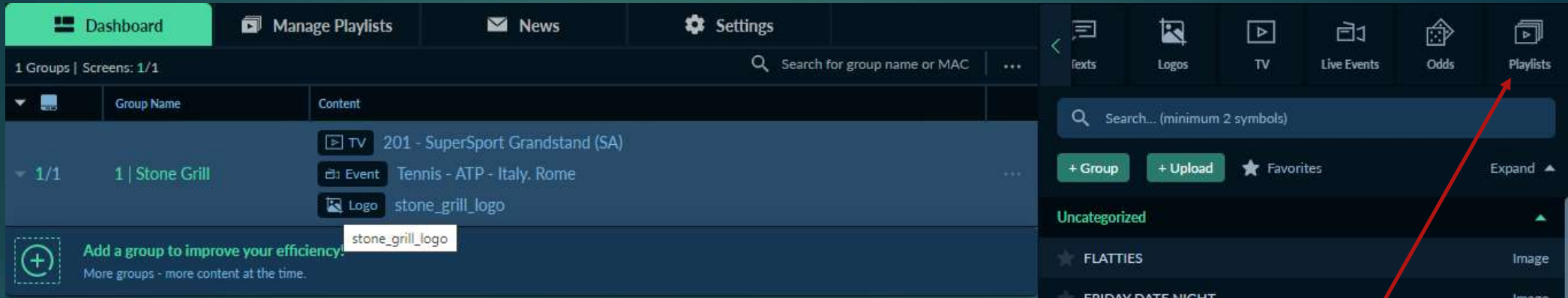
Extra Function

▶ With the Playlist function, you have the capability to plan and schedule your content ahead of time, allowing for efficient long-term management. To access the planning feature, follow these steps:

1. Locate and click on the calendar icon within the Playlist function.
 2. The calendar interface will open, providing you with a visual representation of dates and time.
 3. From there, you can select the desired date or range of dates to plan and schedule your content.
 4. Click on the selected date(s) to set specific content items and durations for that particular time slot.
 5. Repeat this process for other dates as needed to create a comprehensive and pre-planned playlist.
- ▶ By utilizing the calendar feature, you can easily organize your content schedule in advance, enabling you to streamline and automate the content display on your TV without the need for daily manual adjustments.



Find your Playlist



After saving and creating your playlist, you can navigate back to the home screen or dashboard by clicking on the "Dashboard" button. Once you're on the dashboard, you'll find the playlist options available in the toolbar or menu.

To display a specific playlist on your TV, follow these steps:

1. Click on the "Playlist" option in the toolbar or menu.
2. A list of all the playlists you have created will be displayed.
3. Locate the desired playlist and click on it.
4. Drag the selected playlist from the playlist panel onto the dashboard of your TV.

By dragging the playlist onto the dashboard, you will make it active and ready to be displayed on your TV screen. This allows you to easily switch between playlists and control what content is shown at any given time.